

# Flyer Railing Locations for Advertising Centennial Campus - Aspen Building

Flyers may only be posted on the designated railing locations shown on this list. All flyers must be approved prior to posting, please refer to the [campus flyer distribution guidelines](#) for the approval process. For questions, contact [sel@pikespeak.edu](mailto:sel@pikespeak.edu).

## Indoor Flyer Railings (23)

---

### First Floor (3)

---

Railings are located near Room #

**A150**

**A167b**

**A168a**

### Second Floor (12)

---

Railings are located near Room #

**A200   A216b   A222   Hall near the Rec & Wellness Center**

**A205   A218   A223**

**A211   A219   A261**

### Third Floor (8)

---

Railings are located near Room #

**A314   A352   A367**

**A315   A355**

**A324   A359**



Student Engagement & Leadership

**PIKES PEAK STATE COLLEGE**

# Flyer Railing Locations for Advertising Centennial Campus - Aspen Building

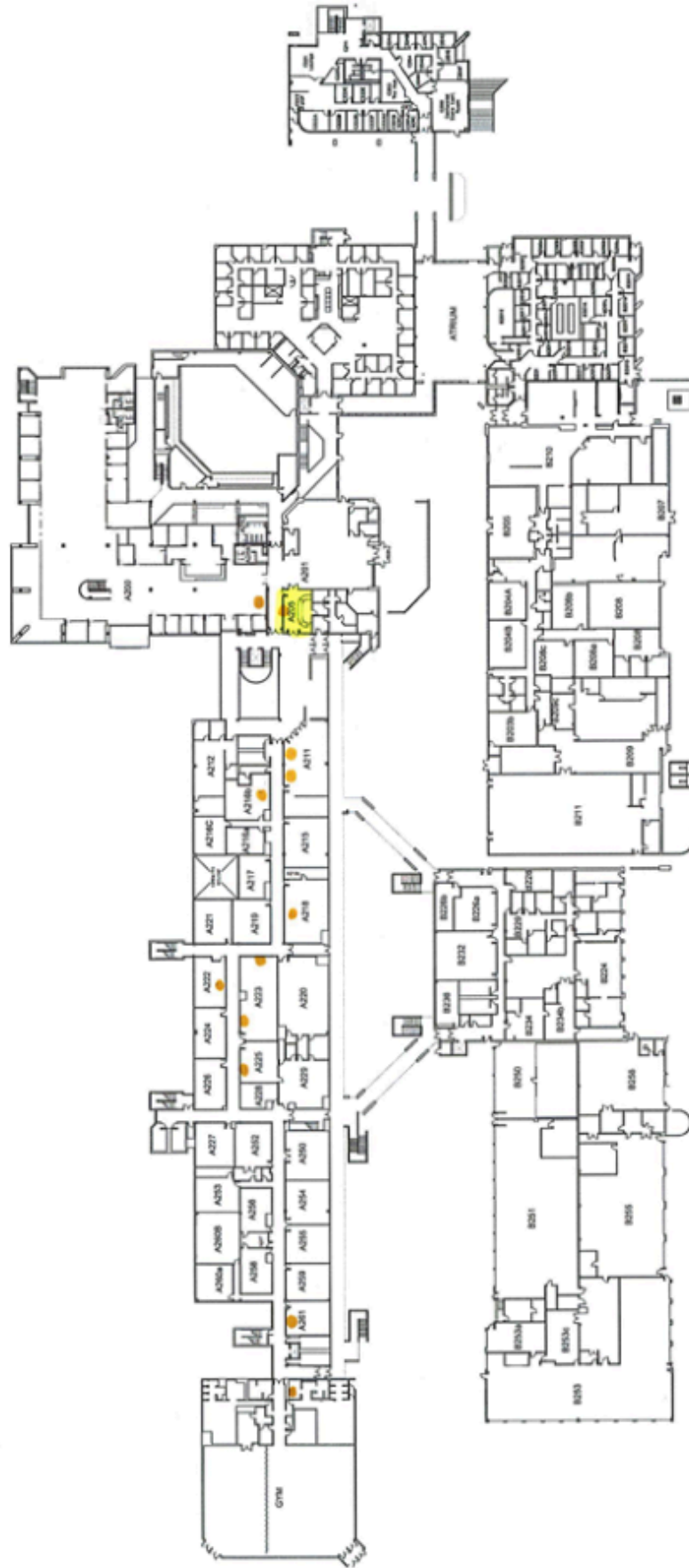
## CENTENNIAL CAMPUS | FIRST FLOOR



3 total railings

# Flyer Railing Locations for Advertising Centennial Campus - Aspen Building

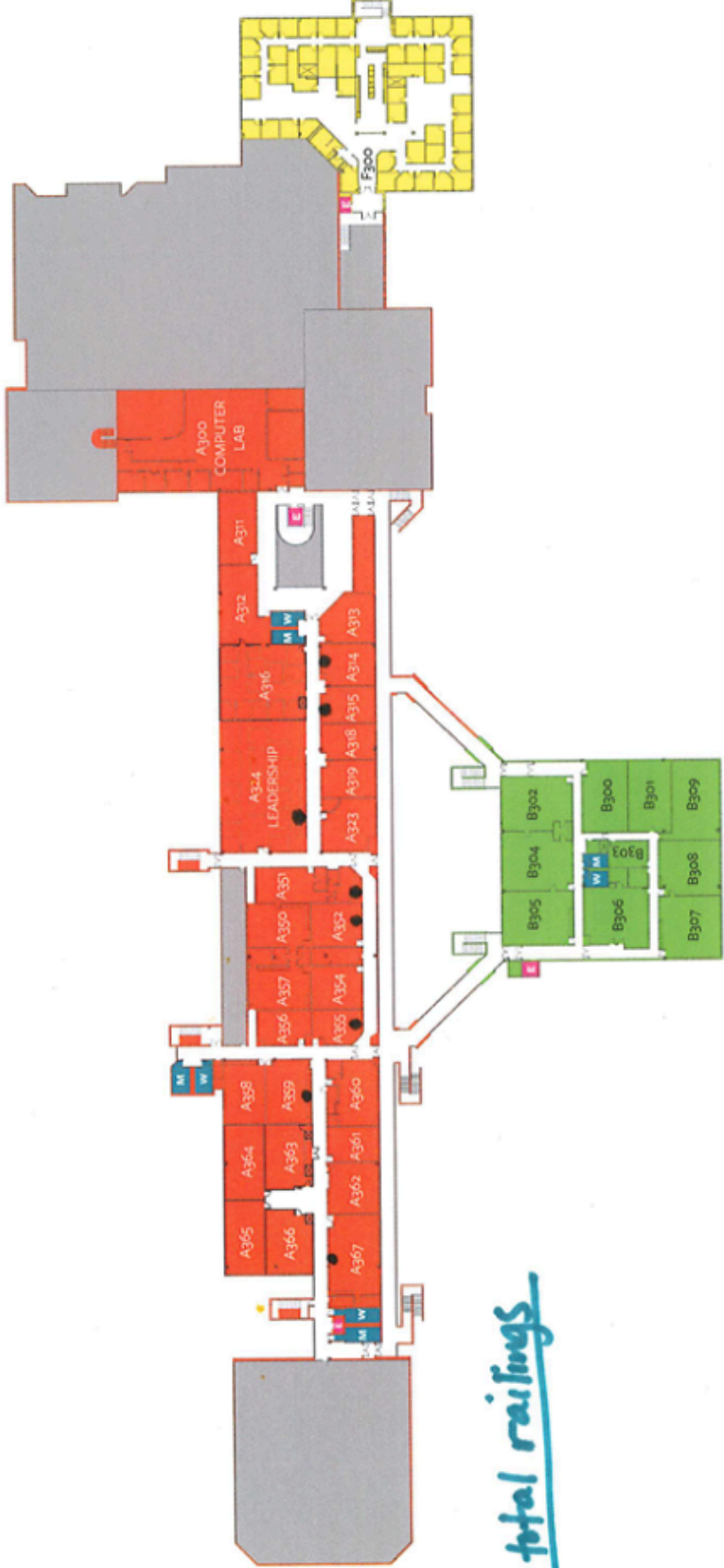
CENTENNIAL CAMPUS | SECOND FLOOR



*12 total railings*

# Flyer Railing Locations for Advertising Centennial Campus - Aspen Building

## CENTENNIAL CAMPUS | THIRD FLOOR



*8 total railings*

# Flyer Railing Locations for Advertising Rampart Campus

Flyers may only be posted on the designated railing locations shown on this list. All flyers must be approved prior to posting, please refer to the [campus flyer distribution guidelines](#) for the approval process. For questions, contact [sel@pikespeak.edu](mailto:sel@pikespeak.edu).

## Indoor Flyer Railings (44)

---

### Upper Level - Second Floor Main Building

---

West Wing Hallways (15)

**West 201 - West 203 Area**

**West 204 - West 205 Area**

**West 213 - West 214 Area**

**West 215 - West 219 Area**

East Wing Hallways (7)

**East 203 - East 204 Area**

**East 207 - East 210 Area**

**East 211 - East 213 Area**

### Lower Level - First Floor Main Building

---

West Wing Hallways (11)

**West 101 - West 106 Area**

**West 112 - West 113 Area**

**West 117 Area**

East Wing Hallways (11)

**East 102 - East 109 Area**

**East 110 - East 114 Area**

**East 115 - East 117 Area**

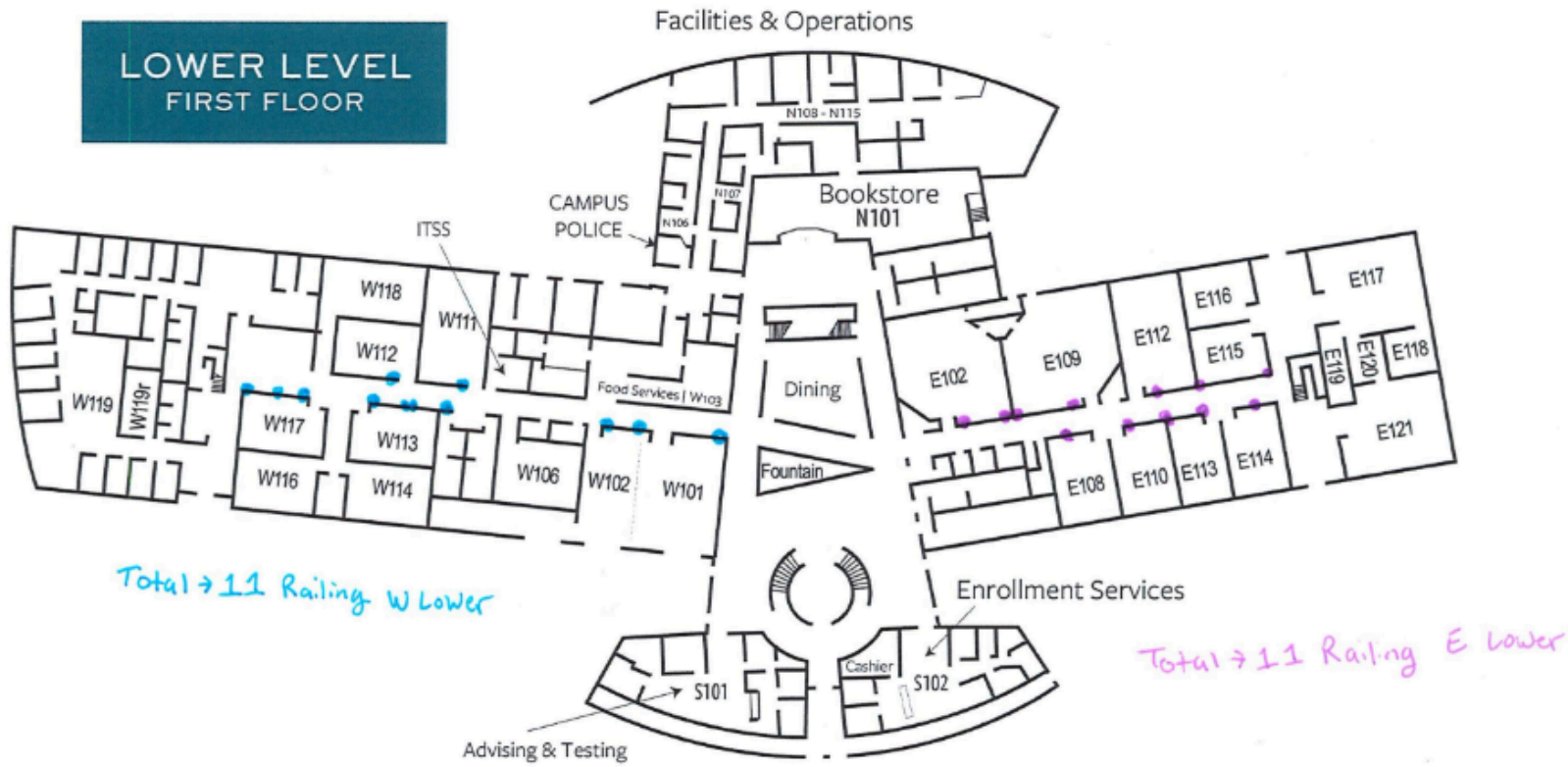


Student Engagement & Leadership

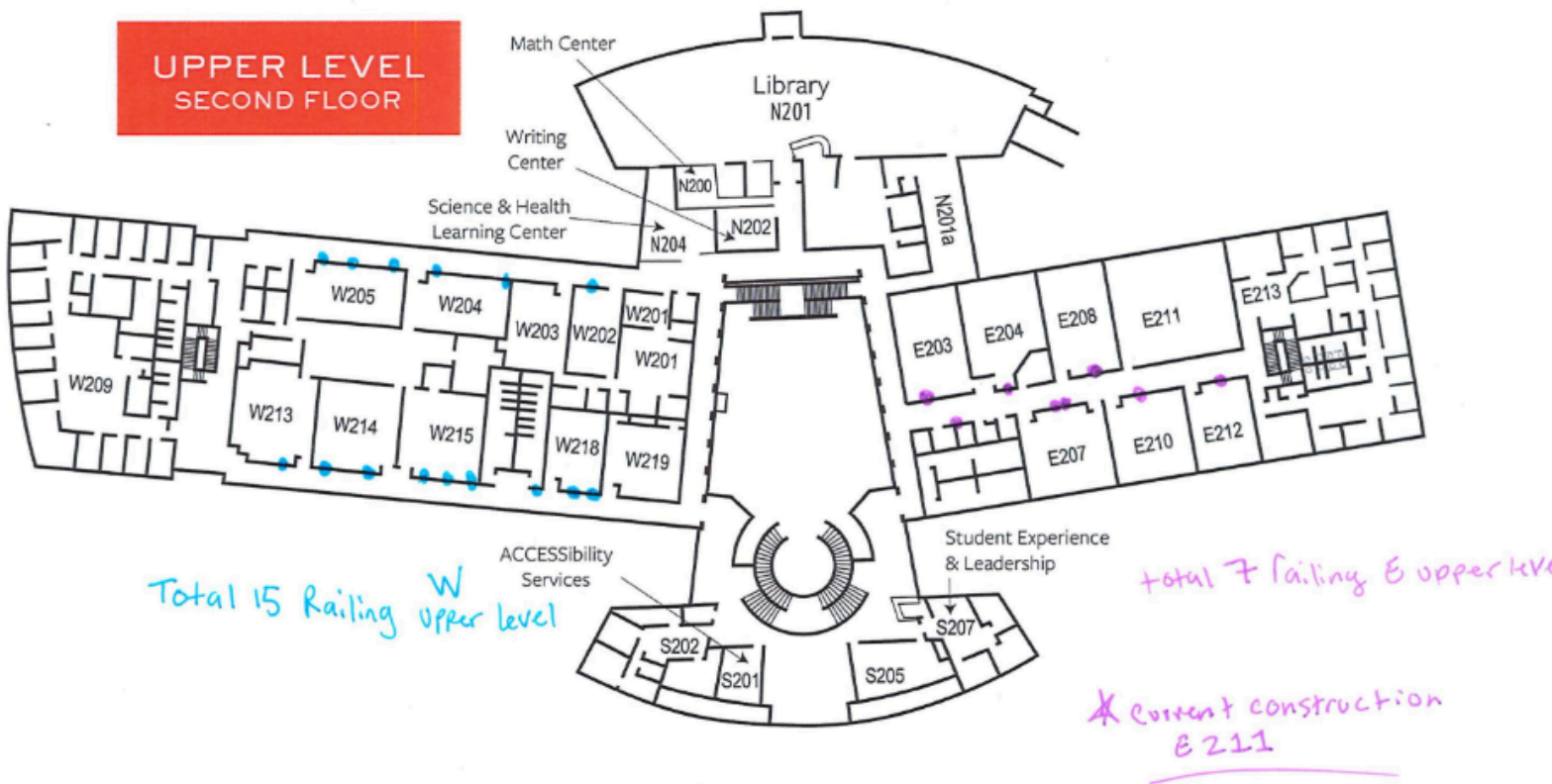
**PIKES PEAK STATE COLLEGE**

# Flyer Railing Locations for Advertising Rampart Campus

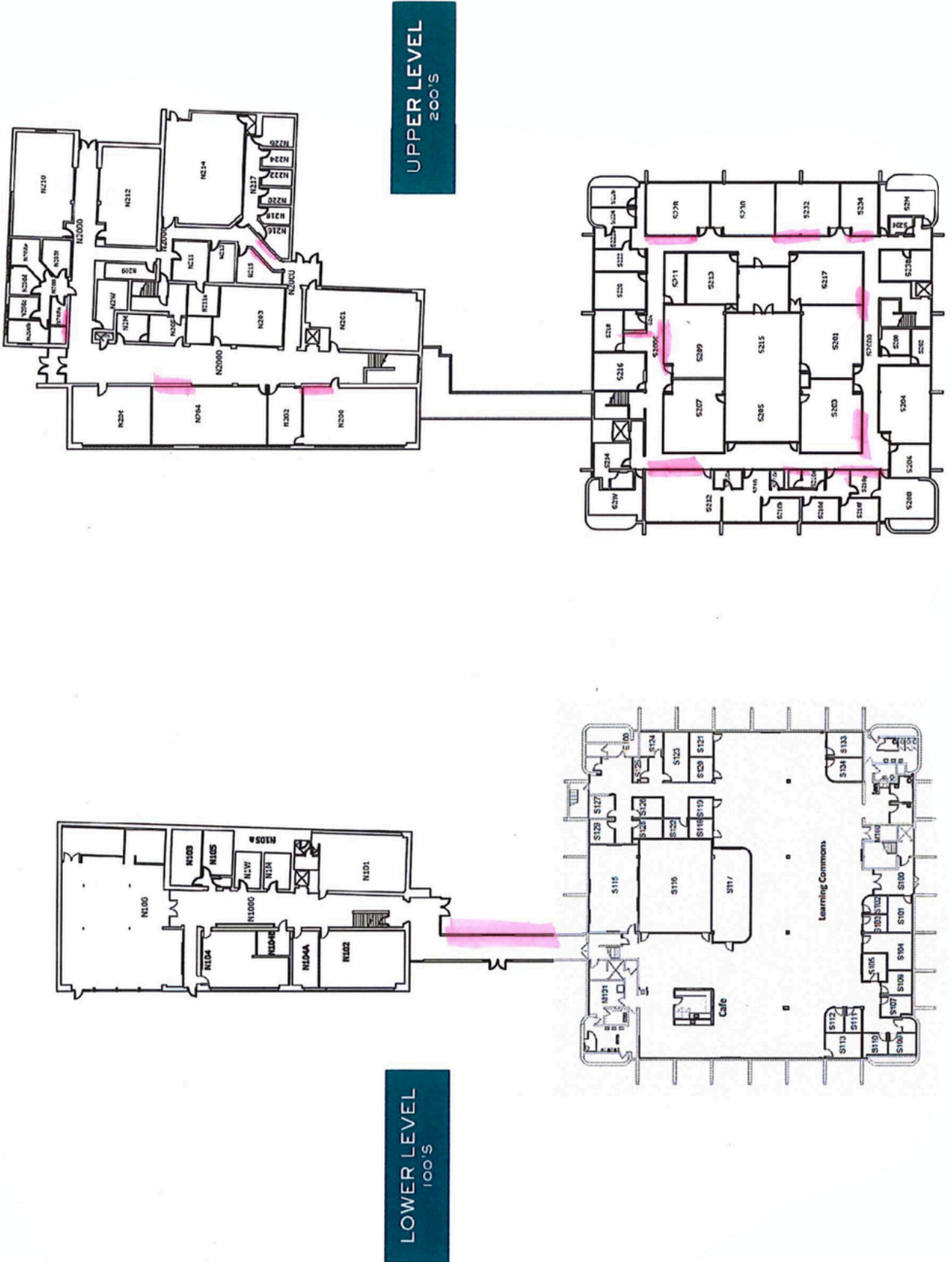
## LOWER LEVEL FIRST FLOOR



## UPPER LEVEL SECOND FLOOR



# Flyer Railing Locations for Advertising Downtown - Main Building



# Flyer Railing Locations for Advertising

## Downtown - Main Building

Flyers may only be posted on the designated railing locations shown on this list. All flyers must be approved prior to posting, please refer to the [campus flyer distribution guidelines](#) for the approval process. For questions, contact [sel@pikespeak.edu](mailto:sel@pikespeak.edu).

### Indoor Flyer Railings (14)

---

#### Lower Level - 100s (1)

---

Railing is located near

**S115 - N101 Connector Hallway - connecting callway across from the building entrance**

#### Upper Level - S Side 200s (8)

---

Inner Hallway	Bottom Hallway
<b>S201   S210</b>	<b>S215</b>
<b>S206   S212</b>	<b>S228</b>
<b>S208</b>	<b>S234</b>

#### Upper Level - S/N Connector (1)

---

Railing is located near

**S216 - S218 Corrdior - connector hallway toward N Building**

#### Upper Level - N Side 200s (4)

---

Top Hallway	Interior Hallway
<b>Between N202 - N204</b>	<b>N215 - across from N200 entrance</b>
<b>Between N204 - N206</b>	<b>N216 - across from N213</b>

